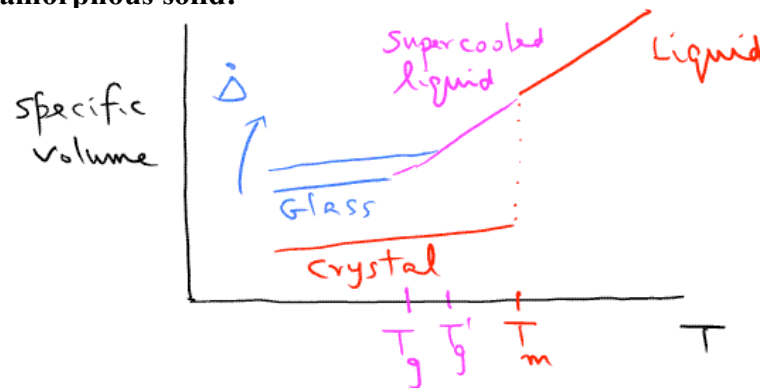


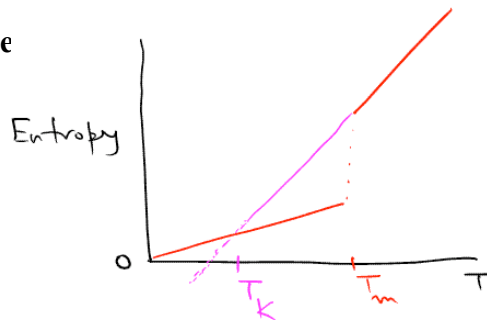
## 4. GLASS TRANSITION

### 4.1. Glass is an amorphous solid:

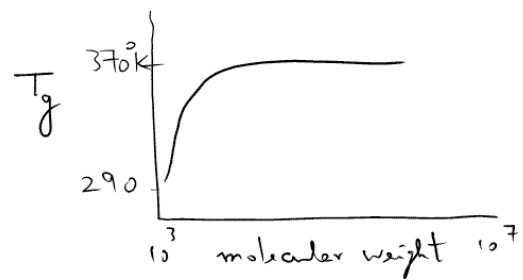
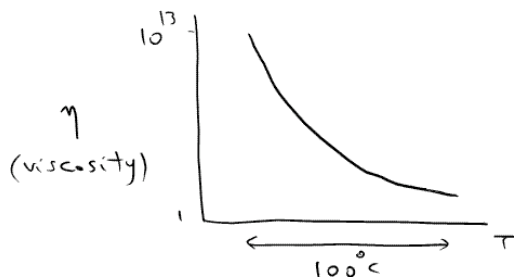


Polyethylene:	$T_g = -120^\circ\text{C}$	$T_m = 135^\circ\text{C}$
Polypropylene:	-10	188
Polystyrene:	100	240
Poly(tetrafluoroethylene)	130	330

### 4.2. Kauzmann Temperature



### 4.3. Squeezing of free volume and conformational entropy:



Vogel-Fulcher; Williams-Landel-Ferry:

$$\eta = A e^{\frac{B}{T-T_0}}$$

$$T_0 + 50^\circ\text{C} \approx T_g$$

$$T_0 \approx T_K$$